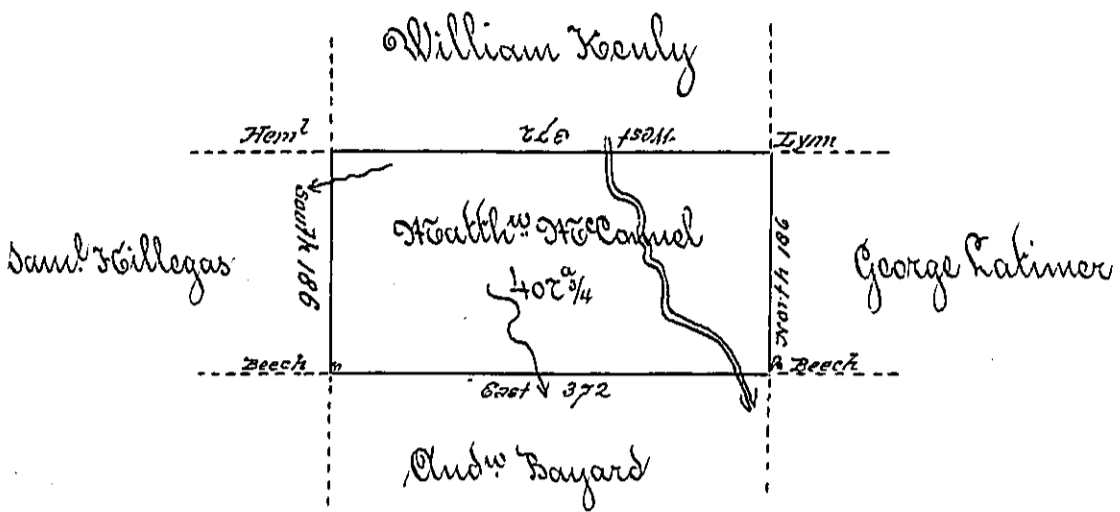


C 104-186



A Draught of a tract of land called _____ situate on the Waters of Loyalsock Creek in Loyalsock Township, County of Northumberland, Adjoining William Keuly & others, Surveyed the 11th day of August 1792 for Heath W McCannel, in Pursuance of a warrant bearing date the 27th day of April 1792. Containing Four hundred seven Acres & three quarters & the usual allowance of six per Cent for roads &c

For
 David Brodhead Esq.
 Surveyor General.

Jo J. Wallis D.S.

IN TESTIMONY that the above is a copy of the original remaining on file in the Department of Internal Affairs of Pennsylvania, made conformably to an Act of Assembly approved the 16th day of February, 1833, I have hereunto set my Hand and caused the Seal of said Department to be affixed at Harrisburg, this third day of December 1901.

James W. Latta
 Secretary of Internal Affairs.